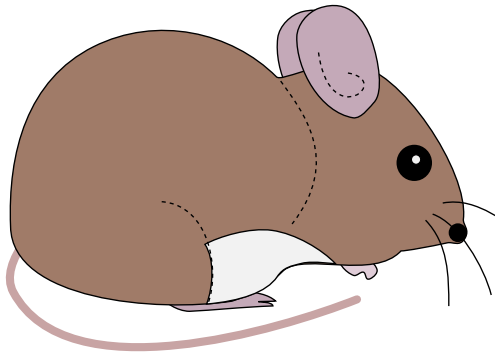


Downeast Thunder Farm Garden Mouse

Copyright 2016 Downeast Thunder Farm
www.downeastthunderfarm.com



Create two mirror image mouse bodies for a double-sided ornament. Position the ear and tack with the decorative stitching as indicated on the pattern using brown floss. Add the decorative stitching to the body using brown floss. For the decorative stitching that defines the leg, run it along the edge of the belly piece to tack the belly into place.

Cut a small circle of black felt for the eye; tack with a white French knot. Add three whiskers using one strand of black floss. I knotted the floss then dipped it in melted candle wax to give it shape. I then threaded it through the face from the back. Alternatively, you could use some small gauge wire to create the whiskers.

Cut a long narrow strip of pink felt for the tail; tack it into place on the wrong side of one of the body parts. Do the same with the feet so they are ultimately sandwiched between the two body parts.

Pin the body parts together and sew the nose with a satin stitch using black floss. Sew through both body pieces when doing this. Sew the edges together with a blanket stitch in brown, pausing to stuff with fiberfill before completing.

Have Fun!

Susan

