

DTF Bird Feeder

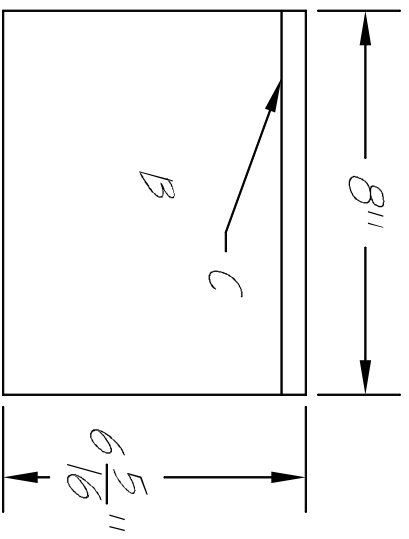
Doweast Thunder Farm

Designed by
Susan Jordan
Bennett
Milbridge, ME

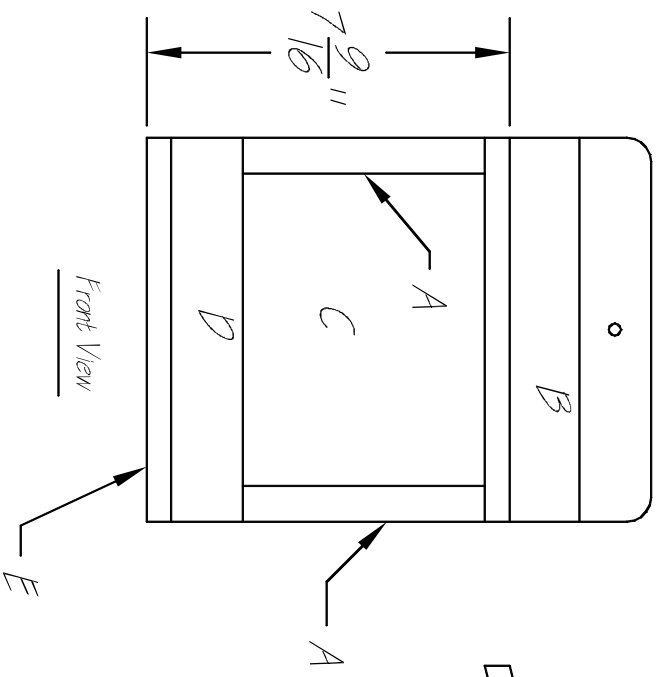
(C) 2013, All Rights Reserved

SIZE	DWG NO.	REV
A	DTF-13F01	

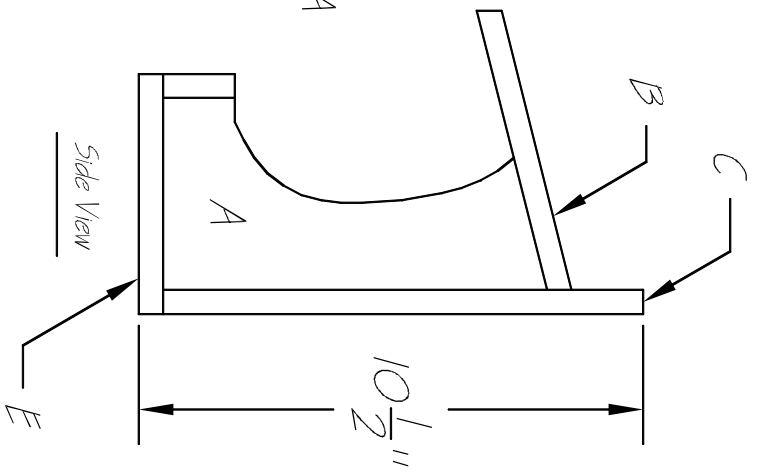
SCALE	DATE	SHEET
3"=1'	20 JAN 2013	1 of 7



Top View



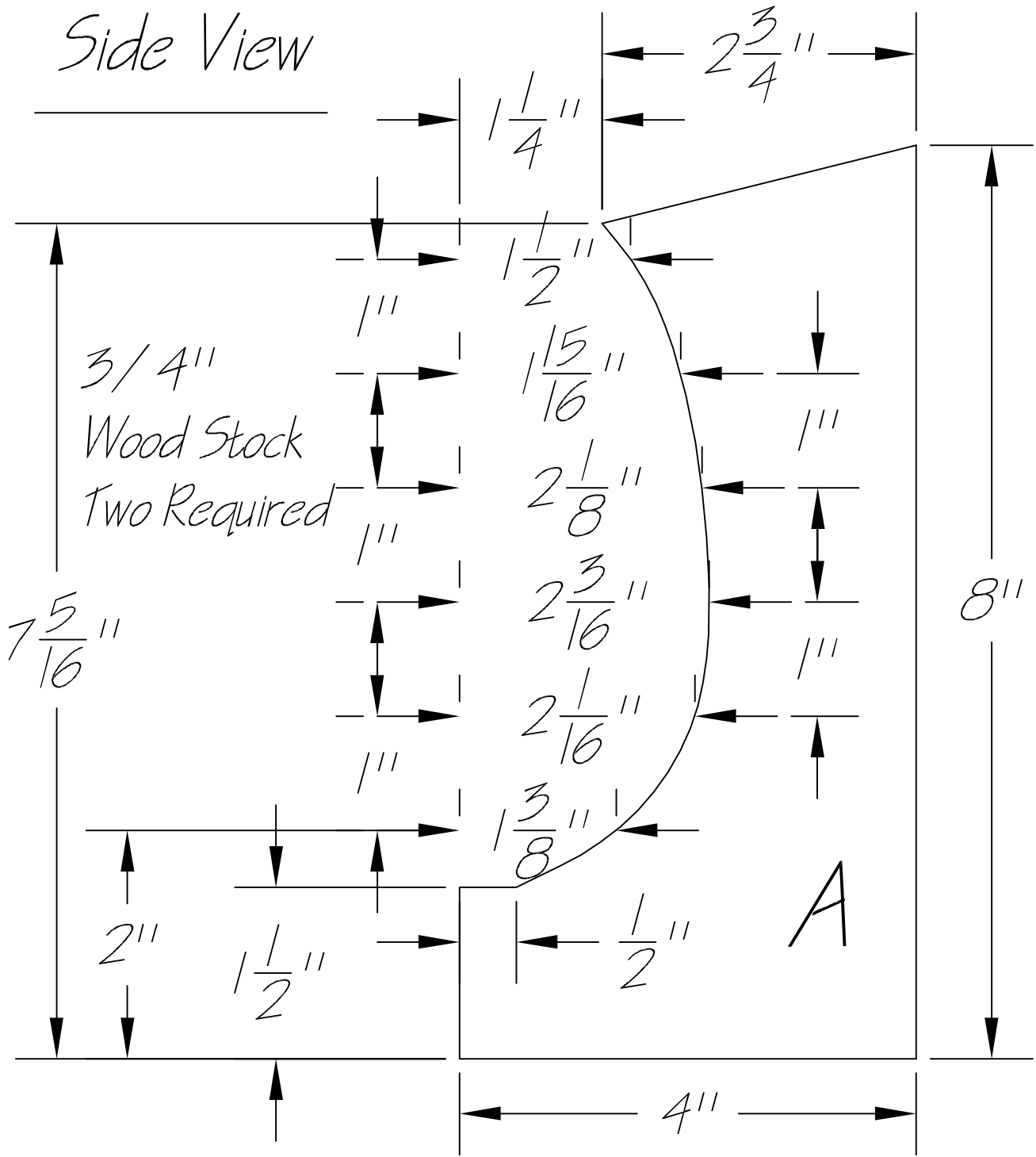
Front View



Side View

Note:
All dimensions shown for individual parts in subsequent drawings.
Recommend using red or white cedar or white pine for bird feeder construction. Unless otherwise noted, assemble bird feeder using exterior (weather-proof) carpenter's glue, and 1" brads.
Prime and paint with water based/latex

Side View



Designed by
Susan Jordan
Bennett
Milbridge, ME

DTF Bird Feeder

Downeast Thunder Farm

SIZE A	DWG NO. DTF-BFO2	REV
-----------	---------------------	-----

Designed by
Susan Jordan
Bennett
Milbridge, ME

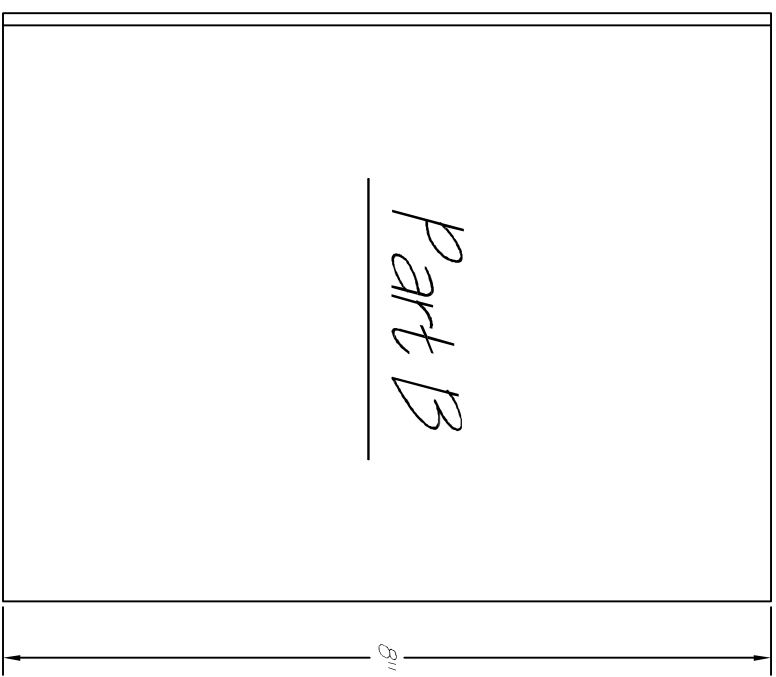
(C) 2013, All Rights Reserved

DTF Bird Feeder

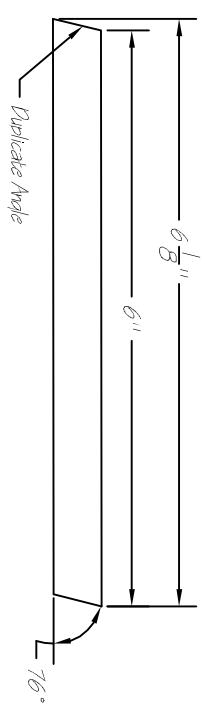
Downeast Thunder Farm

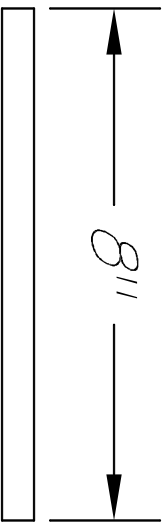
SIZE	DWG NO.	REV
A	DTF-13F03	

SCALE	SHEET
6"=1'	3 of 7

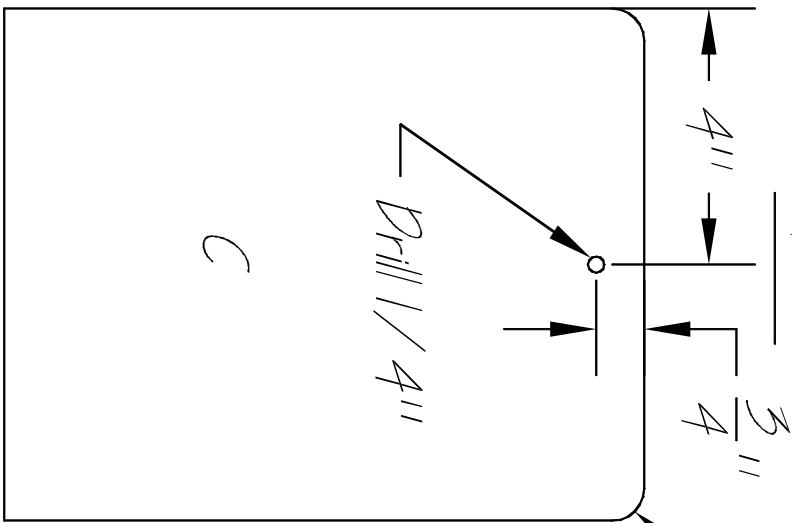


3 / 4" Wood Stock
One Required





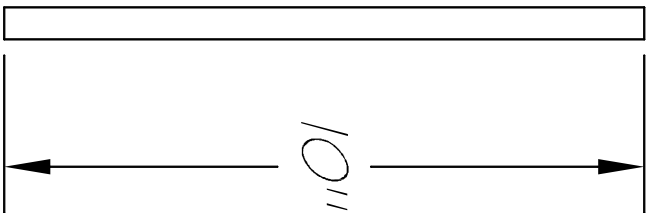
Top View



Designed by
Susan Jordan
Bennett
Milbridge, ME

(C) 2013, All Rights Reserved

DTF Bird Feeder		SIZE A	DWG NO. DTF-13F04	REV
Downeast Thunder Farm		SCALE 4"=1'	20 JAN 2013	SHEET 4 of 7



1/2" Wood Stock
One Required

Part "C"

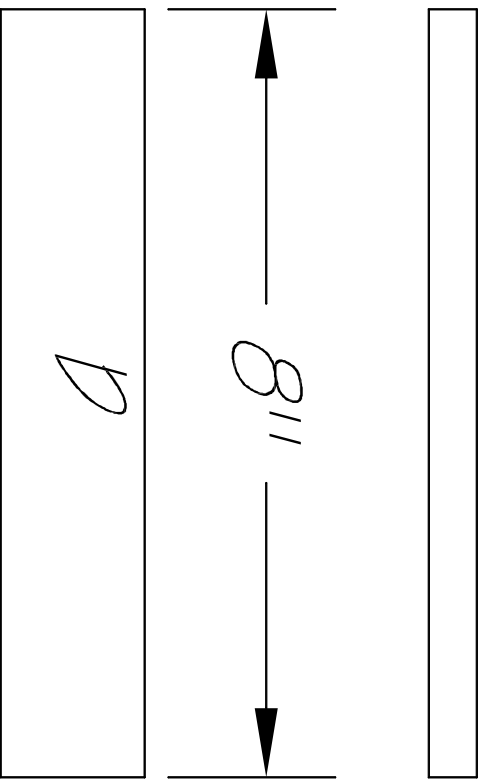
Front View

Part 11P11

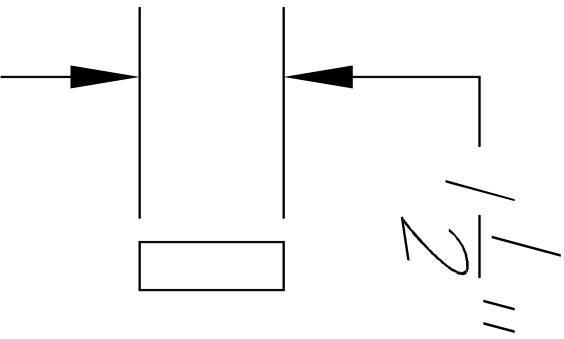
Use 1 / 2" Wood Stock

One Required

Designed by Susan Jordan Bennett Milbridge, ME		DTF Bird Feeder	
(C) 2013, All Rights Reserved		Downeast Thunder Farm	
SIZE A	DWG NO. DTF-13F05	SCALE 6"=1'	REV
20 JAN 2013		SHEET 5 of 7	



Front View



Part 11E11

Designed by
Susan Jordan
Bennett
Milbridge, ME

(C) 2013, All Rights Reserved

DTF Bird Feeder

Downeast Thunder Farm

SIZE
A

DWG NO.

DTF-13F06

REV

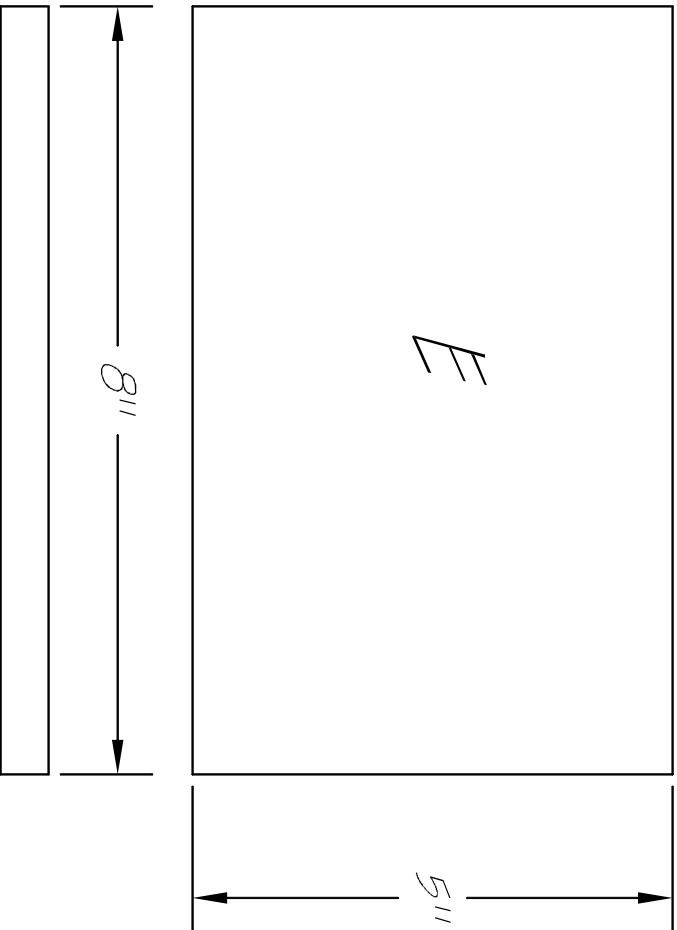
SCALE

6"=1'

20 JAN 2013

SHEET

6 of 7



Use 3 / 4"
Wood Stock
One Required



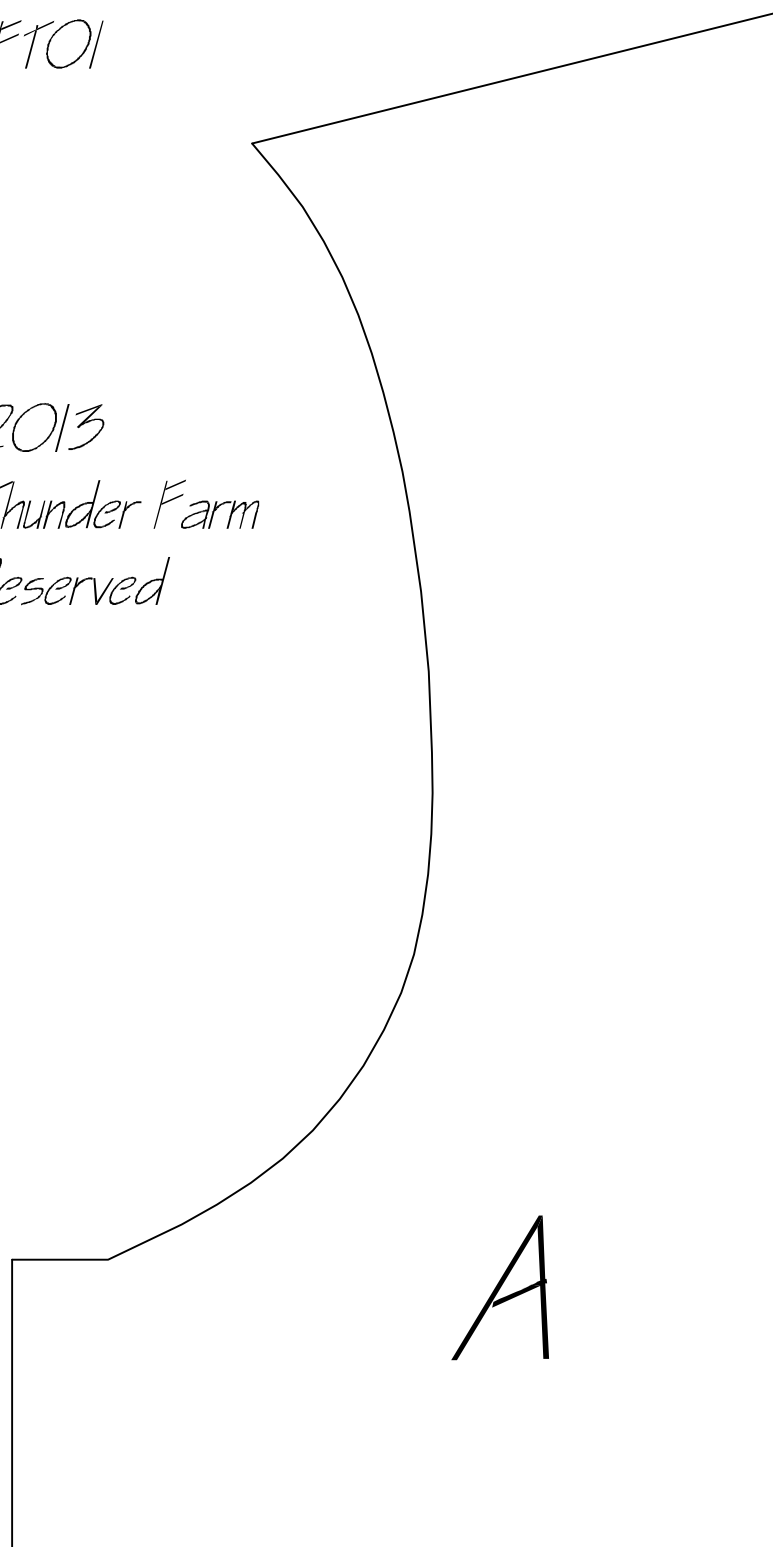
Designed by Susan Jordan Bennett Milbridge, ME		DTF Bird Feeder	
		Downeast Thunder Farm	
(C) 2013, All Rights Reserved	SIZE A	DWG NO. DTF-13F07	REV
SCALE None	20 JAN 2013	SHEET 7 of 7	

Bill of Materials Required For One Downeast Thunder Farm Bird Feeder

- 1" x 6" x 24" Red or White Cedar, or Eastern White Pine (2 Part A's)
- 1" x 10" x 24" Red or White Cedar, or Eastern White Pine (Parts B, C, D, E)
- 1/2 Pint Each of Exterior Latex Primer & Paint
- 1 Small Container of Exterior Carpenter's Glue
- 1/4 Pound of 1" Brads

DWG# BFT01

Copyright 2013
Downeast Thunder Farm
All Rights Reserved



Downeast Thunder Farm Bird Feeder
Part "A" Full Size Template