

Downeast Thunder Farm Penguin Stocking Instructions

Felt Choices

I used Baby Blue for the stocking, Sea Kelp for the tree, Strawberry Dream for the scarf, Fresh Linen for the bear, and White.

Cutting Out the Stocking Pattern

Print two copies of the stocking pattern. Cut out one on the dashed lines. Cut out the other on the solid line. Match the two pieces together and tape them to create the full-size stocking pattern.

Cut out two of the stockings and the pattern pieces for the winter scene – one of each.

Create the Polar Bear

Position the nose and sew around the edge with a running stitch using one strand of black floss. Sew the running stitch that defines the mouth. Sew an 8mm black bead (or French knot) for the eye. With one strand of gray floss, sew the ear and arm with a backstitch. Position the scarf pieces – the smallest tail beneath the neckband. Snip the tails along the lines to create fringe. Sew the scarf to the bear with a blanket stitch using two strands of matching colored floss.



Assemble the Parts

1. Lay out the snow for positioning and tuck the tree under the snow. Pin the tree and sew with a blanket stitch using two strands of matching green floss. Add the decorative stitching to the tree with a backstitch using two strands of white floss.
2. Sew the snow to the stocking front with a white blanket stitch along the top edge. Add the white running stitches on the snow, as illustrated.
3. Position the bear and attach it with a blanket stitch using two strands of white floss.
4. Using two strands of floss (I used one white and one silver strand), sew the snowflakes.

Sewing the Stocking

Cut the cuff from a piece of white felt approximately 7.5" x 3". I cut the bottom edge with pinking shears for extra detail. Pin it to the top of your stocking front. Trim the sides to fit the stocking. Sew the top edge of the cuff to the body front with a blanket stitch using three strands of white floss. Repeat for the stocking back. Cut a 4" x ¾" piece of blue felt for the hanging loop. Sew a white blanket stitch along the edges. Fold the piece in half and sew the loop to the inside of one of the stocking pieces. Sew the stocking front and back together with a white running stitch leaving the top open.

Have fun!

Downeast Thunder Farm Christmas Stocking

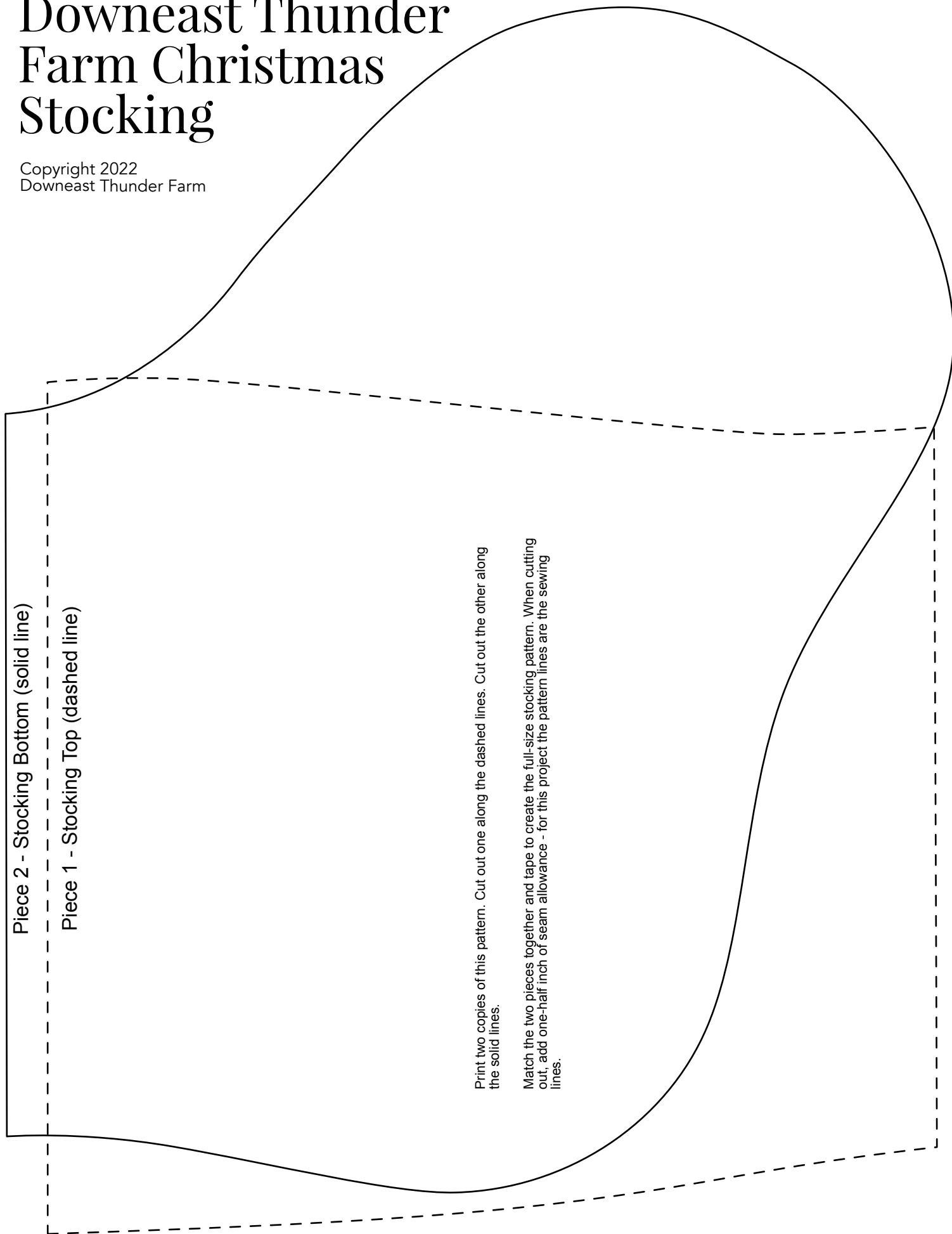
Copyright 2022
Downeast Thunder Farm

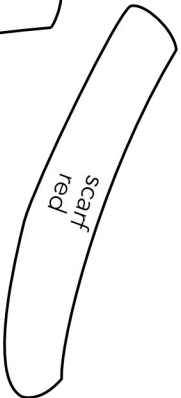
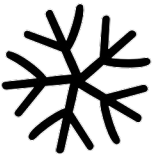
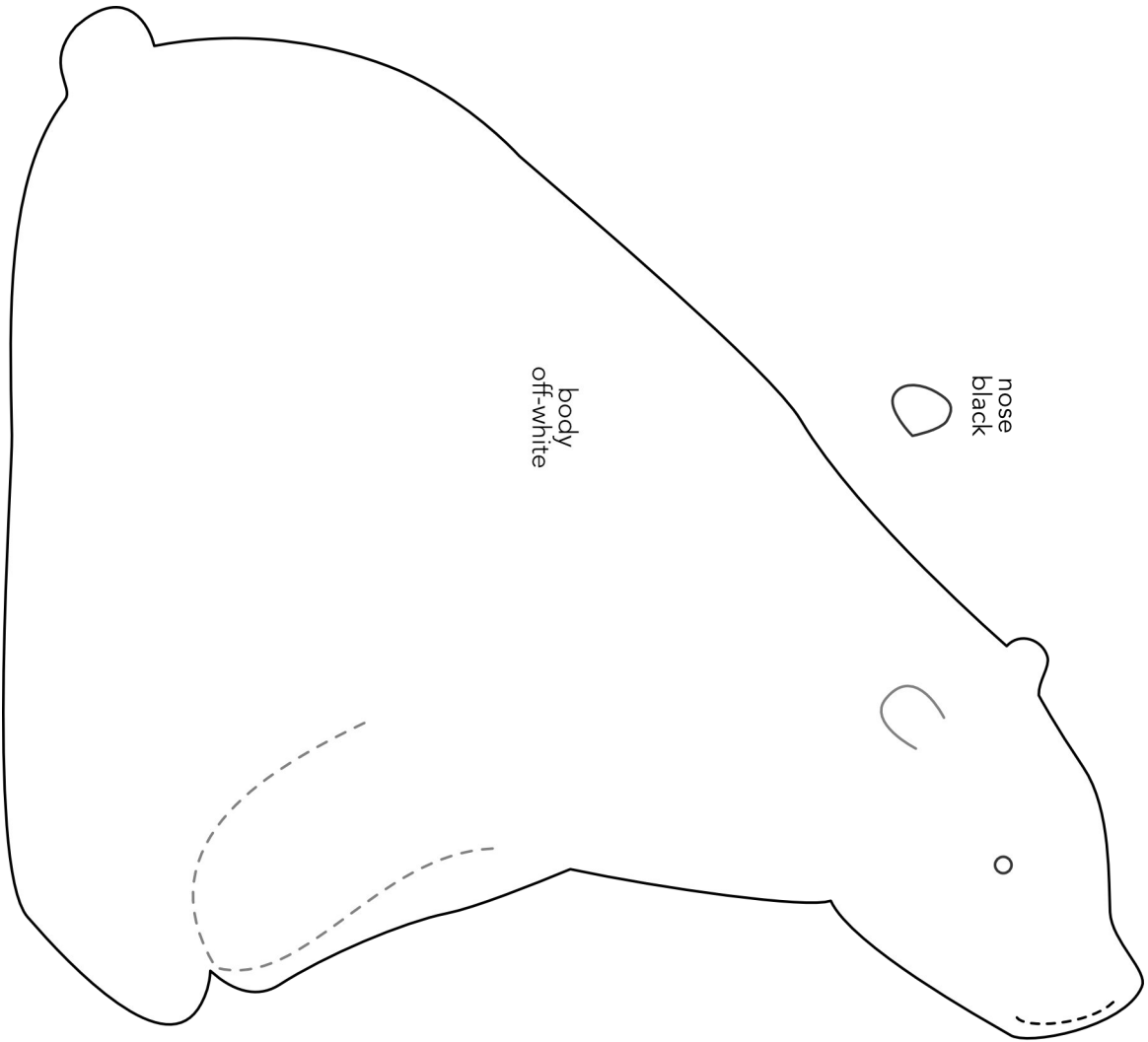
Piece 2 - Stocking Bottom (solid line)

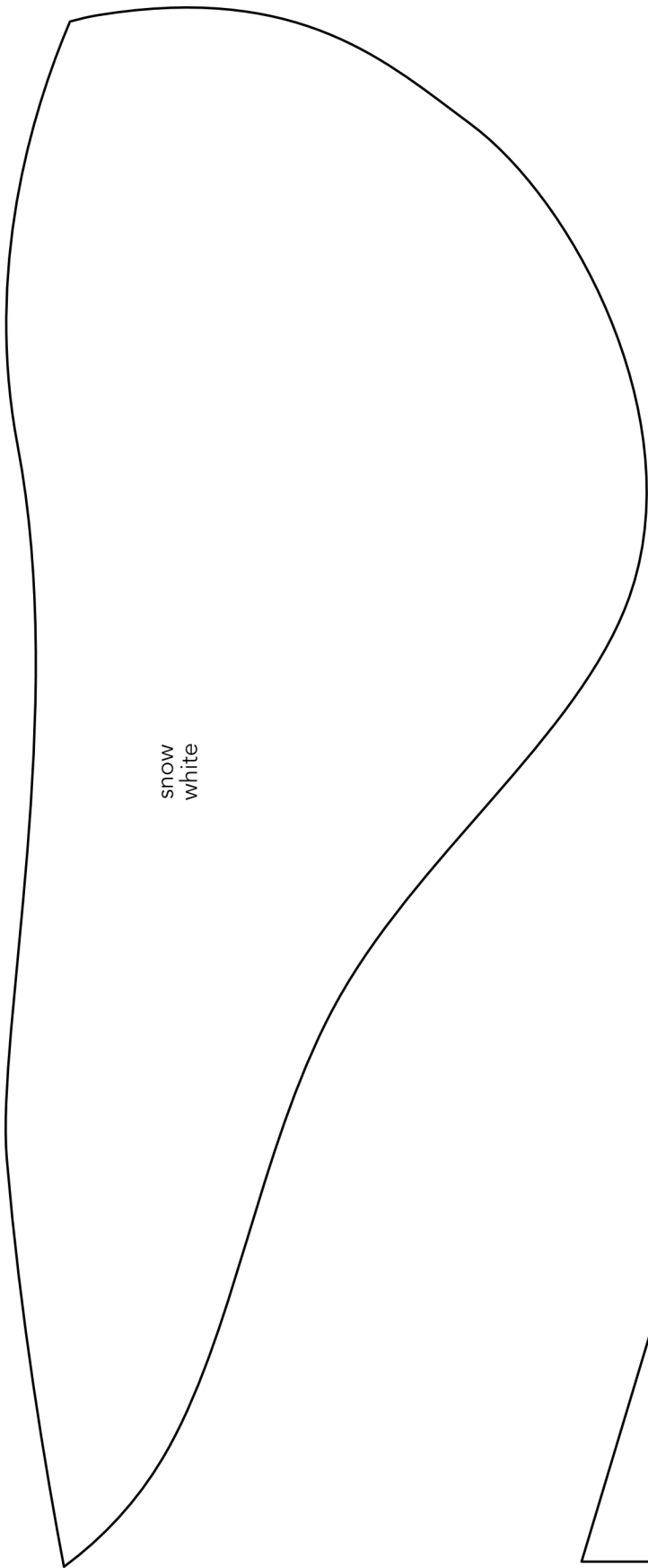
Piece 1 - Stocking Top (dashed line)

Print two copies of this pattern. Cut out one along the dashed lines. Cut out the other along the solid lines.

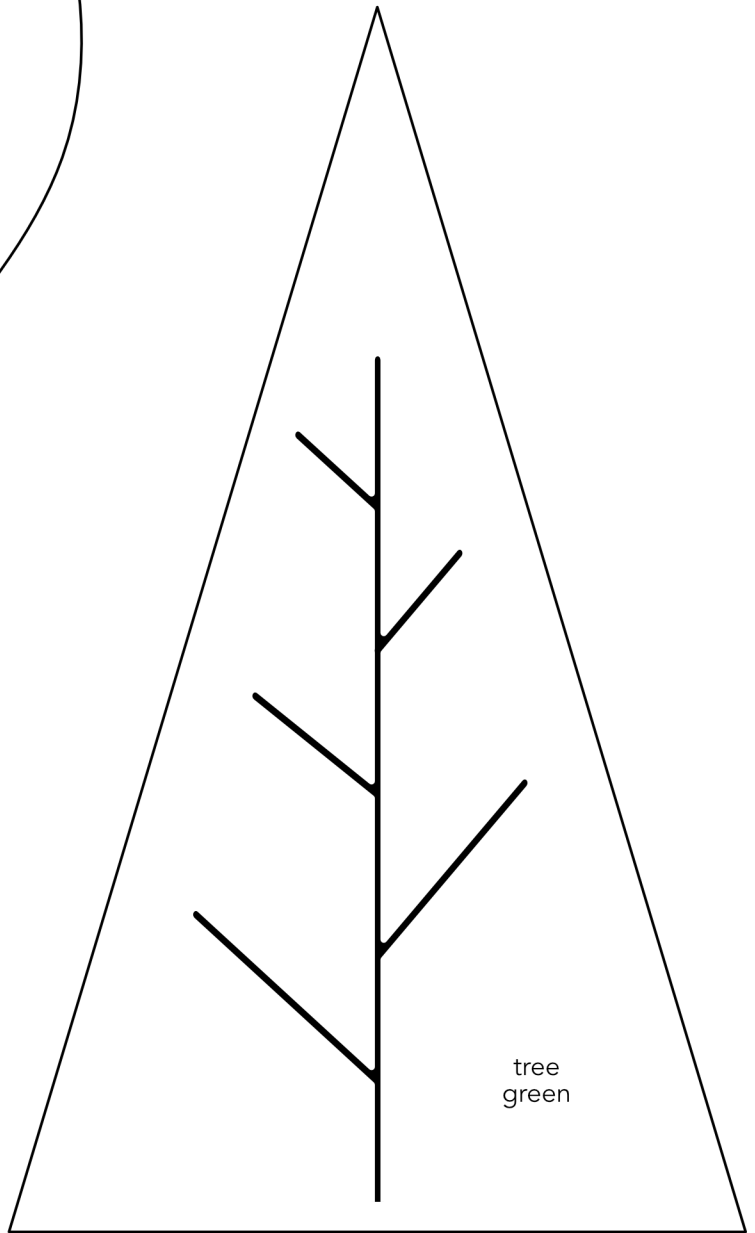
Match the two pieces together and tape to create the full-size stocking pattern. When cutting out, add one-half inch of seam allowance - for this project the pattern lines are the sewing lines.







snow
white



tree
green