

Downeast Thunder Farm Moose Stocking Instructions

Fabric Choices

Select your fabric. I used a cotton snowflake pattern for the outside and white corduroy for the inside. The corduroy gives the stocking substance. If using cotton for both the inside and outside, use some iron-on interface to provide firmness.

Cutting Out the Stocking Pattern

Print two copies of the stocking pattern. Cut out one on the dashed lines. Cut out the other on the solid line. Match the two pieces together and tape to create the full-size stocking pattern. When cutting out the fabric, add one-half inch for the seam allowance. With your fabric folded right sides together, cut out two fronts and two insides.

Cut out the pattern pieces for the winter scene. When cutting out the snow pattern piece, add one-half inch of seam allowance along the bottom.

Create the Moose

With black floss, add the running stitches that define the legs and face. Create the eye with a satin stitch. Use a lazy daisy stitch for the nose. Position the hooves and tack along the top edge with black floss. Tack the antlers to the back of the body so the stitches do not show on the front.

Assemble the Parts

1. Layout the snow, trees, and trunks. Tuck the bottoms of the tree trunk under the snow and pin. Set the trees aside.
2. Sew the snow to the stocking front with a white blanket stitch along the top edge. Add the white running stitches on the snow, as illustrated.
3. Sew a brown blanket stitch along the sides of the tree trunks.
3. Reposition the trees. Sew a green blanket stitch along the edge of each tree.
4. Position the moose and attach it with a blanket stitch using brown floss along the body, beige floss for the antlers, and black for the hooves.
5. Position the holly leaves and tack with red seed beads (or red French knots). With green floss, tack each holly leaf with a blanket stitch.
6. Position the moose ear and tack with a brown blanket stitch. With a darker brown floss, add the decorative stitching for the inner ear.
7. Using white floss, sew white bugle beads on the tree bows' edge, as illustrated.



8. Choose the star or the moon for your pattern. The stocking cuff will come down 2.5 inches, so place the star/moon accordingly. Sew with a blanket stitch using matching color floss. Or, use silver floss as I did.

Sewing the Stocking

Right sides of the stocking facing each other, sew the edges together, leaving the top open; I used a sewing machine. Repeat with the stocking lining. Trim the seam allowance on both the inside and outside to get rid of some of the bulk. With the lining inside out, tuck it inside the outer stocking, wrong sides together (so the inside of your stocking will have a nice finished look).

Cut a piece of your lining fabric - or another fabric for the cuff. To determine the length, measure the top opening of the stocking. Double that number and add an inch to give your seam allowance. Cut out a piece this long by 6" wide. Fold the fabric bringing the two short sides together and sew along the short edge so you'll have a loop. Fold the loop of fabric wrong sides together. Tuck this inside the stocking and test the fit - it should fit snugly. You may need to snug up the seam if your cuff is too large.

Create a hanging loop by cutting a length of the cuff material 6" long by 2.5" wide. Fold lengthwise, wrong sides together, and then stitch along the long edge. Work the tube of fabric rightside out.

Tuck the cuff in the stocking with the unfinished edges lined up with the top of the stocking. Tuck the entire piece of loop fabric between the stocking and the cuff at the edge of the stocking, lining the edge with the stocking and cuff's top edge. Sew around the stocking's top edge.

Pull the cuff out from inside the stocking and fold it over the edge. Your loop will be dangling free; fold the loop over the edge of the cuff and stitch it to the outside of the stocking.

Have fun!

Downeast Thunder Farm Christmas Stocking

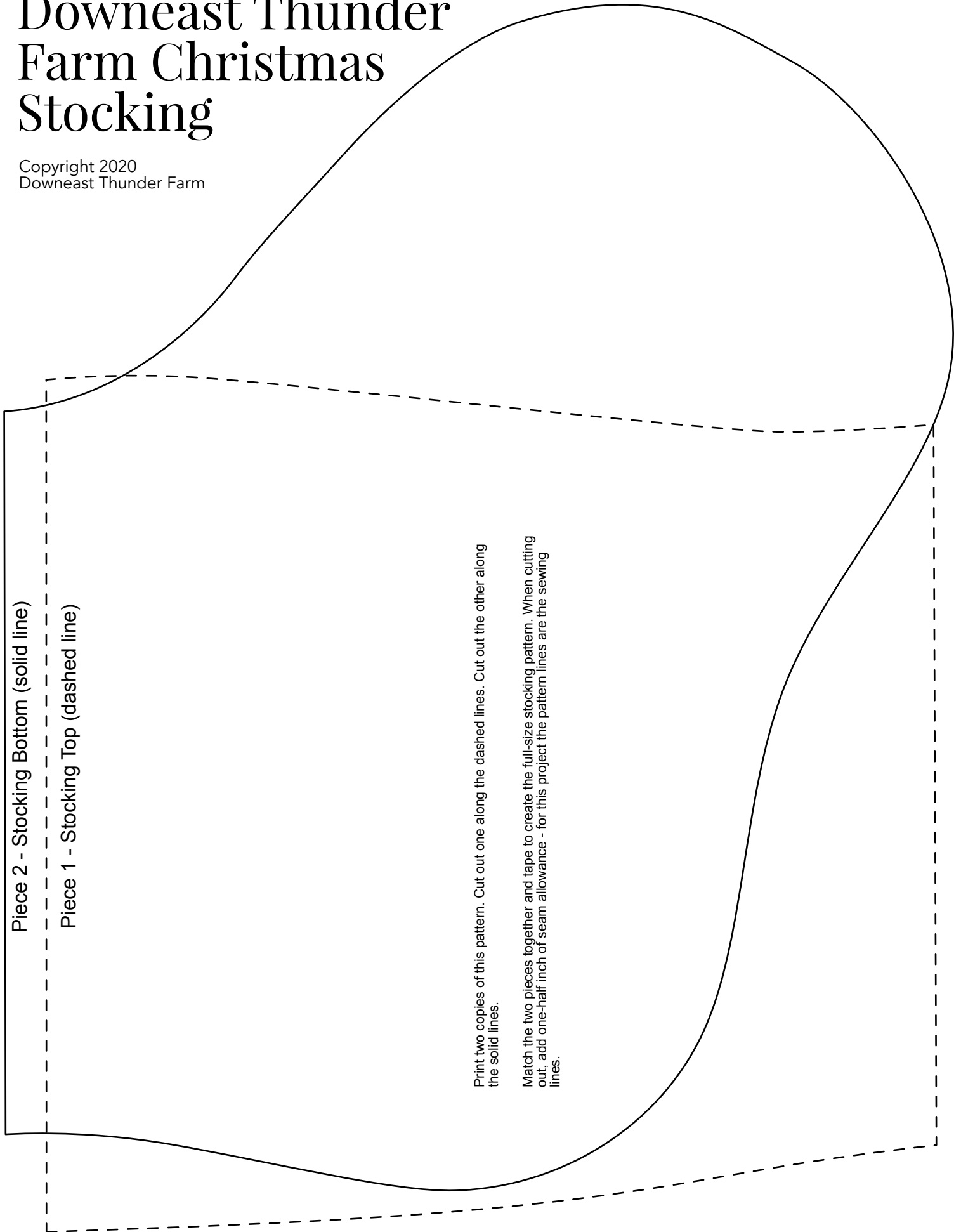
Copyright 2020
Downeast Thunder Farm

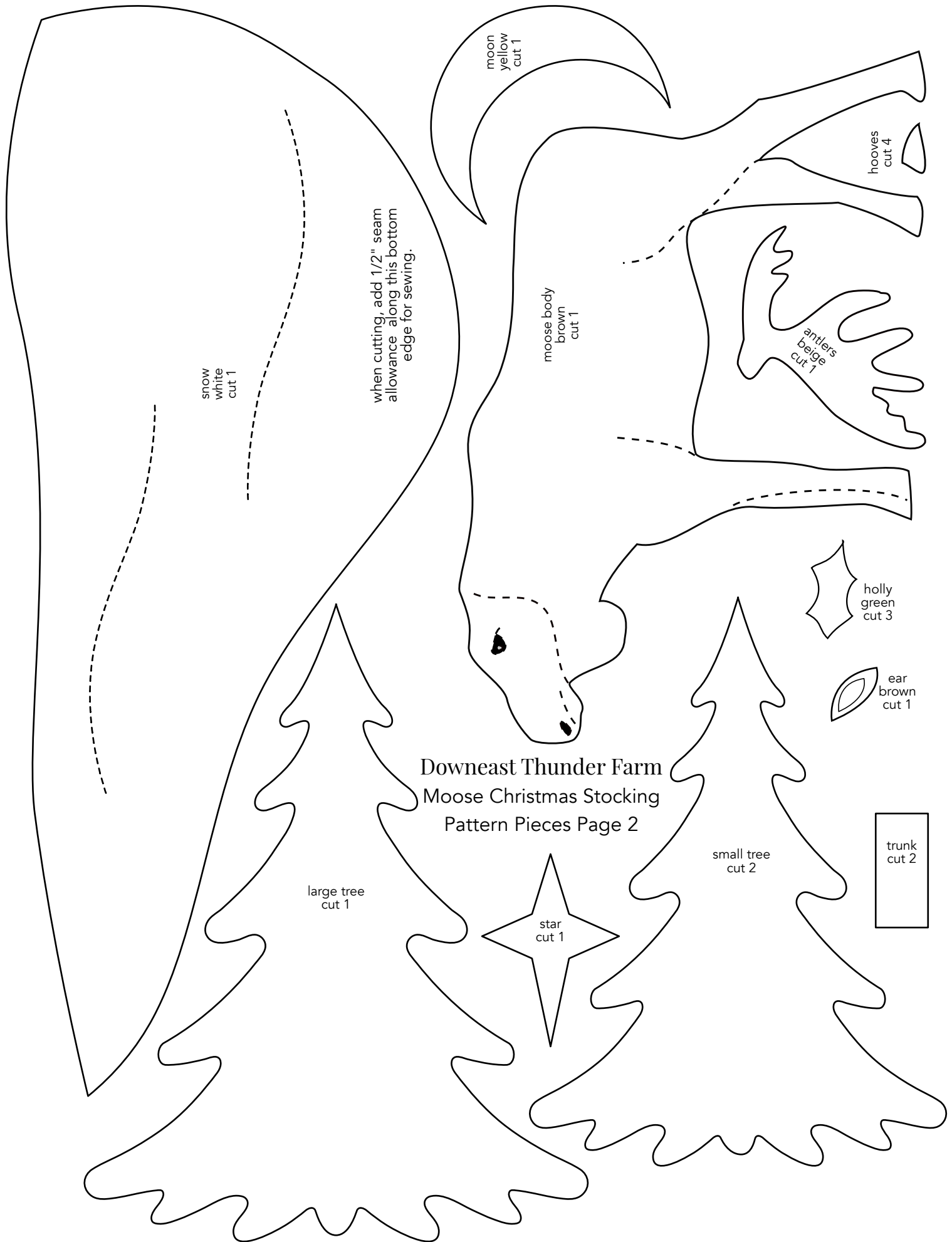
Piece 2 - Stocking Bottom (solid line)

Piece 1 - Stocking Top (dashed line)

Print two copies of this pattern. Cut out one along the dashed lines. Cut out the other along the solid lines.

Match the two pieces together and tape to create the full-size stocking pattern. When cutting out, add one-half inch of seam allowance - for this project the pattern lines are the sewing lines.





moon
yellow
cut 1

hooves
cut 4

moose body
brown
cut 1

antlers
beige
cut 1

snow
white
cut 1

when cutting, add 1/2" seam
allowance along this bottom
edge for sewing.

holly
green
cut 3

ear
brown
cut 1

Downeast Thunder Farm
Moose Christmas Stocking
Pattern Pieces Page 2

large tree
cut 1

star
cut 1

small tree
cut 2

trunk
cut 2