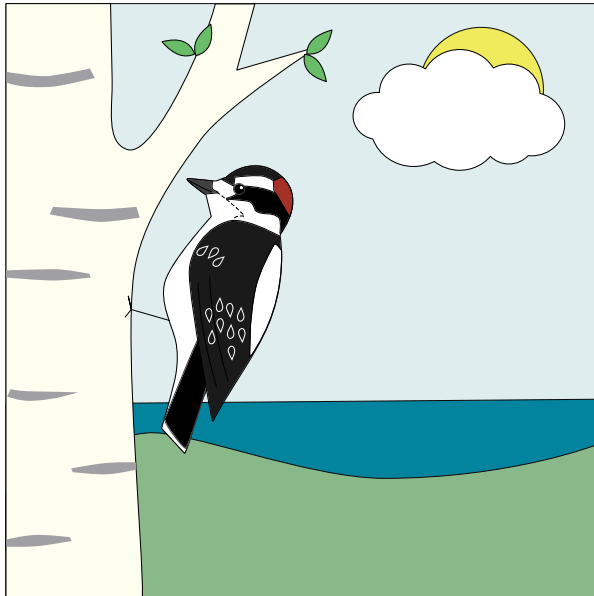
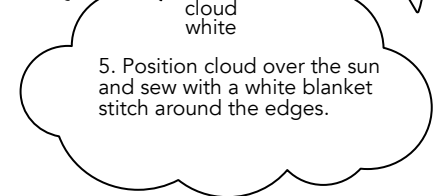
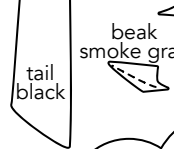


Downeast Thunder Farm Woodpecker Square

Copyright 2020 Downeast Thunder Farm



leaf
pea soup green



4. Create the woodpecker. Layer the face pieces and eye and tack into place with a black running stitch. Position the cap and tack with a red running stitch. Position the beak and tack with a black running stitch for the mouth. Tack the tail and the wing with a black running stitch along the inside edge. Tack the back with a white running stitch along the inside edge. Add the lazy daisy stitches to the wing.

Sew the bird to the scene with a blanket stitch matching the floss to the color of felt. Add the decorative running stitches to the face. Sew the leg with a black backstitch.

face markings
black

beak
smoke gray

cloud
white

5. Position cloud over the sun and sew with a white blanket stitch around the edges.

eye
black



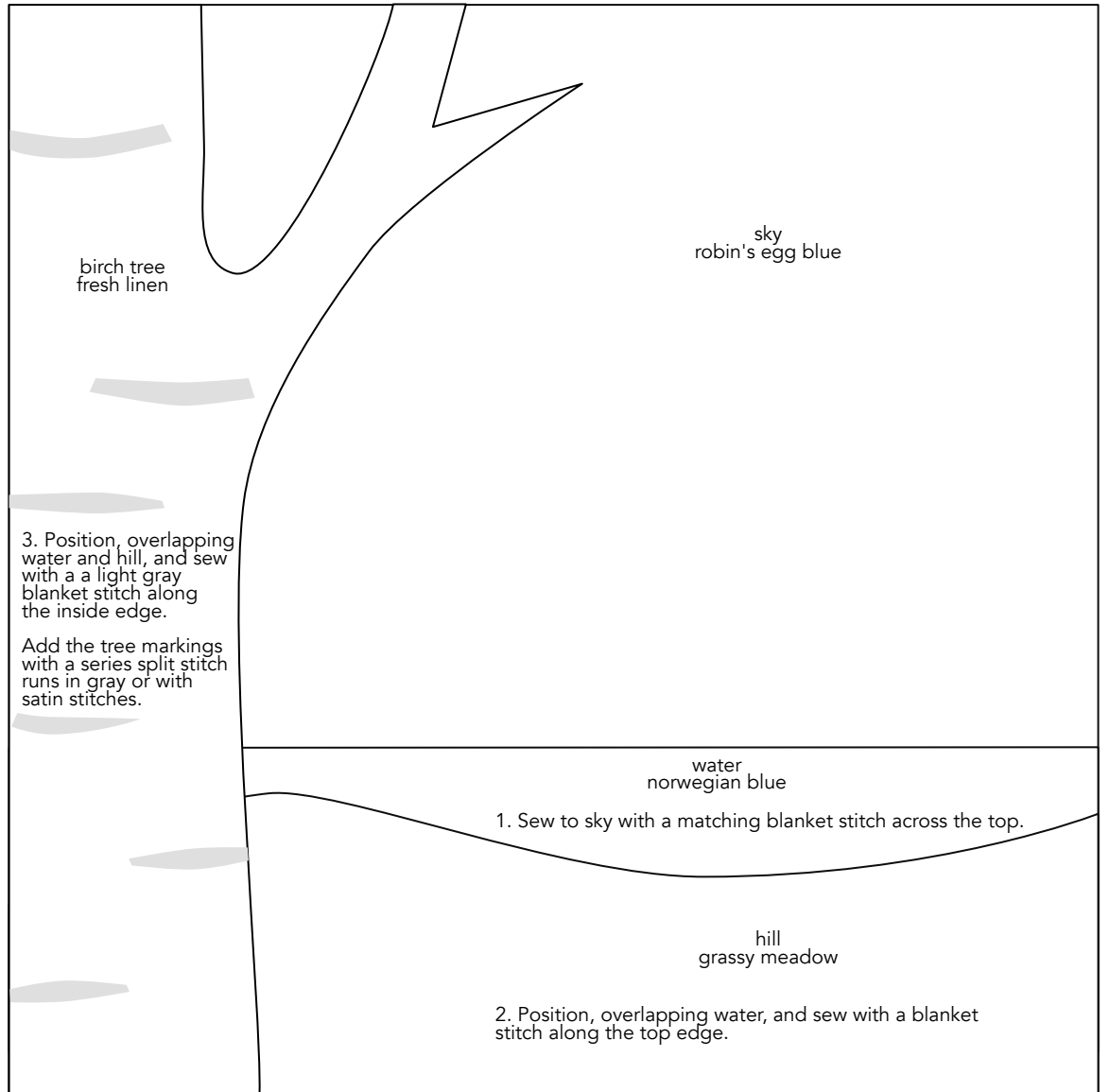
sun
yellow

5. Position the sun and sew with a matching blanket stitch around the edge.

body
white

back
white

birch tree
fresh linen



sky
robin's egg blue

3. Position, overlapping water and hill, and sew with a light gray blanket stitch along the inside edge.

Add the tree markings with a series split stitch runs in gray or with satin stitches.

water
norwegian blue

1. Sew to sky with a matching blanket stitch across the top.

hill
grassy meadow

2. Position, overlapping water, and sew with a blanket stitch along the top edge.