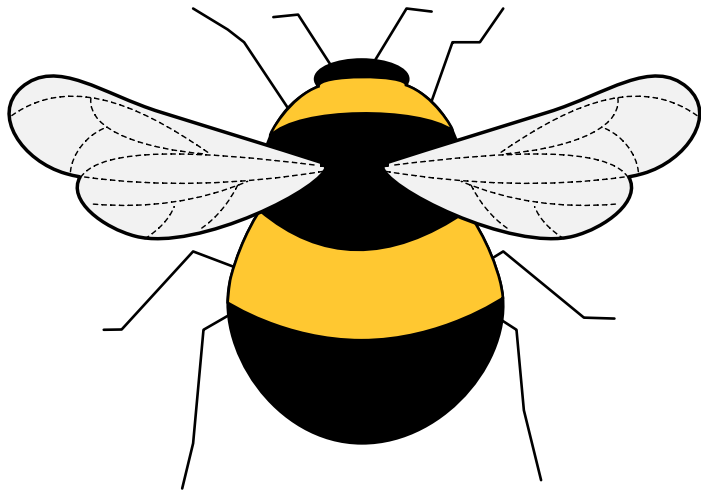


Downeast Thunder Farm Bumble Bee

Copyright 2020 Downeast Thunder Farm



- Cut two of each pattern part. Use one strand of floss throughout.
- On the front and back bodies, sew on the yellow parts with a blanket stitch using black floss.
- Using gray floss, add the decorative stitches to all four wings. Match a pair of wings with the wrong sides together. Sew them together with a white blanket stitch around the edges; tack the wing on the body front with a few white stitches. Repeat with the other wings.
- On the body front, add two black seed beads for eyes.
- Cut and bend black wire for the antennae and legs. Tack each wire to the wrong side of the back body.
- Using one strand, sew the body pieces together with a black blanket stitch, pausing about 1 inch before finishing and lightly stuff with fiberfill.

Have fun!

Juan

