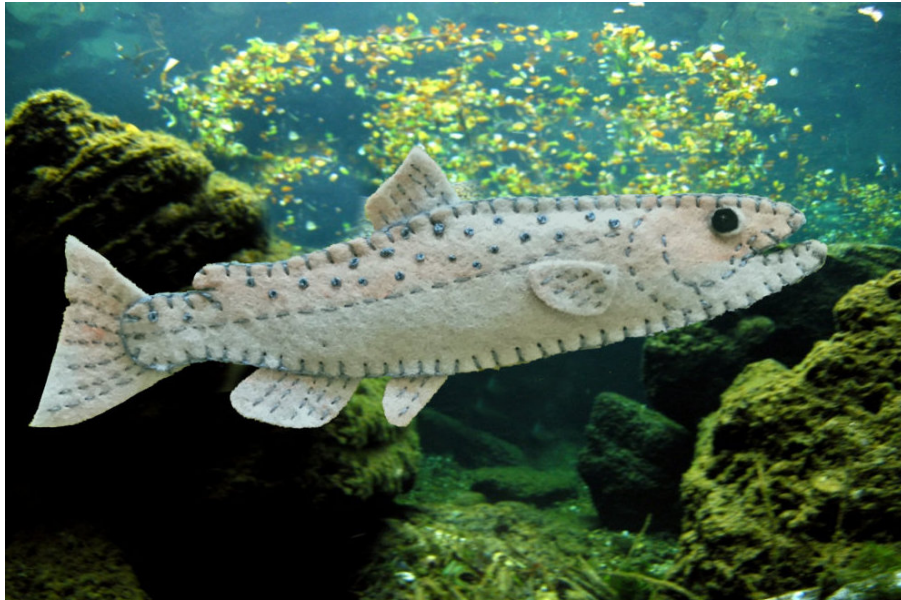
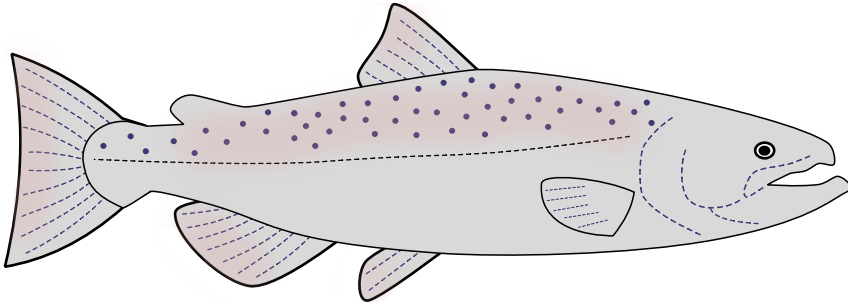


Downeast Thunder Farm Chinook Salmon

Copyright 2019 Downeast Thunder Farm



- You can use any color you like for this salmon. I opted for light gray felt for all pieces except the upper eye where I used black felt. I used a blue-gray floss throughout, except for the eyes; use black for the eyes.
- Before cutting out the pattern pieces, I painted a wash of orangey/salmon paint on my gray felt. In a dish, use a touch of acrylic paint and water it down. Brush a light, irregular coat onto the felt. Let dry. Cut out your pattern pieces.
- With one strand of floss, add the decorative stitching to all fins except the pectoral fin (the dashed lines). The dotted lines show where to overlap the pattern piece with the body. When adding the stitching to the fins, start at the edge that will be hidden by the body. Sew the running stitch, and then follow the same path back to where you started that line. The goal is to make the stitching look tidy on both the front by hiding the "jump" to the next line of stitching.
- With two strands of floss, add the decorative stitching to the body.
- Layer the lower eye and upper eye pieces and position on the body. Tack with an "x" using black floss and finish off with a black seed bead.
- Position the pectoral fin and tack in place with tiny stitches using one strand of floss.
- With two strands of floss, add the French knots as illustrated on the pattern.
- Lightly tack the fin pieces to the backside of one of the body pieces so the stitches do not show on the front.
- Pin the two body pieces together, sandwiching the fins between the bodies. Using two strands of floss sew the two body pieces together with a blanket stitch. Before you finish the blanket stitch, pause to lightly with fiberfill.

Have fun!

Susan

