

Downeast Thunder Farm Barred Owl Felt Ornament

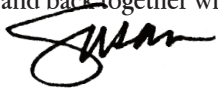
Begin with the face. Tack the whiskers and beak into place on the face using gray floss. Pin the eyes and eye background into place and tack with a French knot in off white floss. Snip the bottom edges of the whiskers in a couple of places to give it a feathery look.

Sew the edges of the face to the head with a blanket stitch in brown. Pin the finished head to the body front and pin. Pin the wing into place on the body front – tuck under the head. Add the decorative stitching to the wing and head with off-white floss.

Add the brown decorative stitching to the belly section on the body front. Pin the body front to the body back. Sew the two pieces together with a blanket stitching using brown floss. The blanket stitch should follow the cut line of the body front. Pause to stuff with fiberfill before finishing.

Add the decorative stitching to the owl's tail. Create the feet with a bit of folded wire tucked between the two body pieces. Alternatively, tuck the claws in between the body front and back and tack into place while sewing the body front and back together with the blanket stitch.

Have fun!



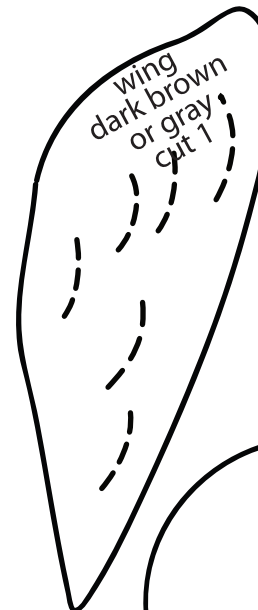

eye
black
cut 2

whiskers
gray
cut 1

©2013 Downeast Thunder Farm
www.downeastthunderfarm.com



body back
light brown or gray
cut 1

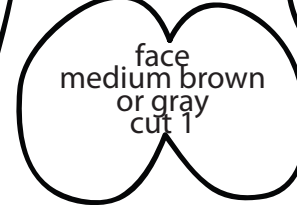


wing
dark brown
or gray
cut 1

eye-bkgrnd
light gray
cut 2

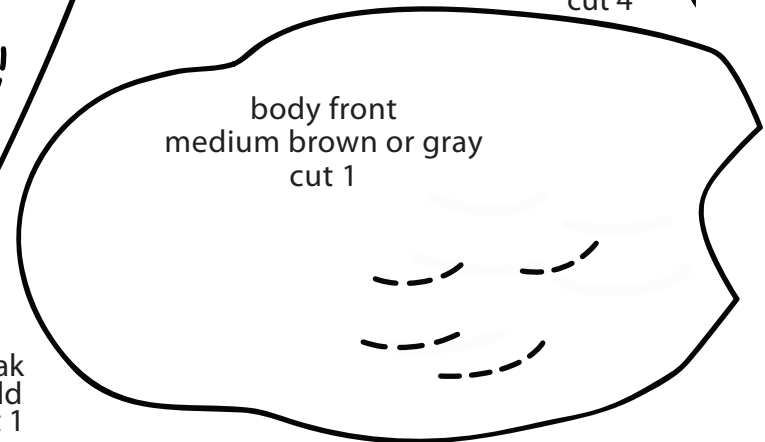


head
dark brown or gray
cut 1



face
medium brown
or gray
cut 1

claws
(optional)
gold
cut 4



body front
medium brown or gray
cut 1

beak
gold
cut 1

